



ADDISON
HOMES

PechaKucha

GROWING A BUSINESS
ON A FOUNDATION OF BEST PRACTICES

Todd Usher

Addison Homes

Our Story



ADDISON

HOMES, LLC

HOME BUILDER QUALITY SYSTEMS



OOPS ... WHERE'S THE QUALITY SYSTEM?



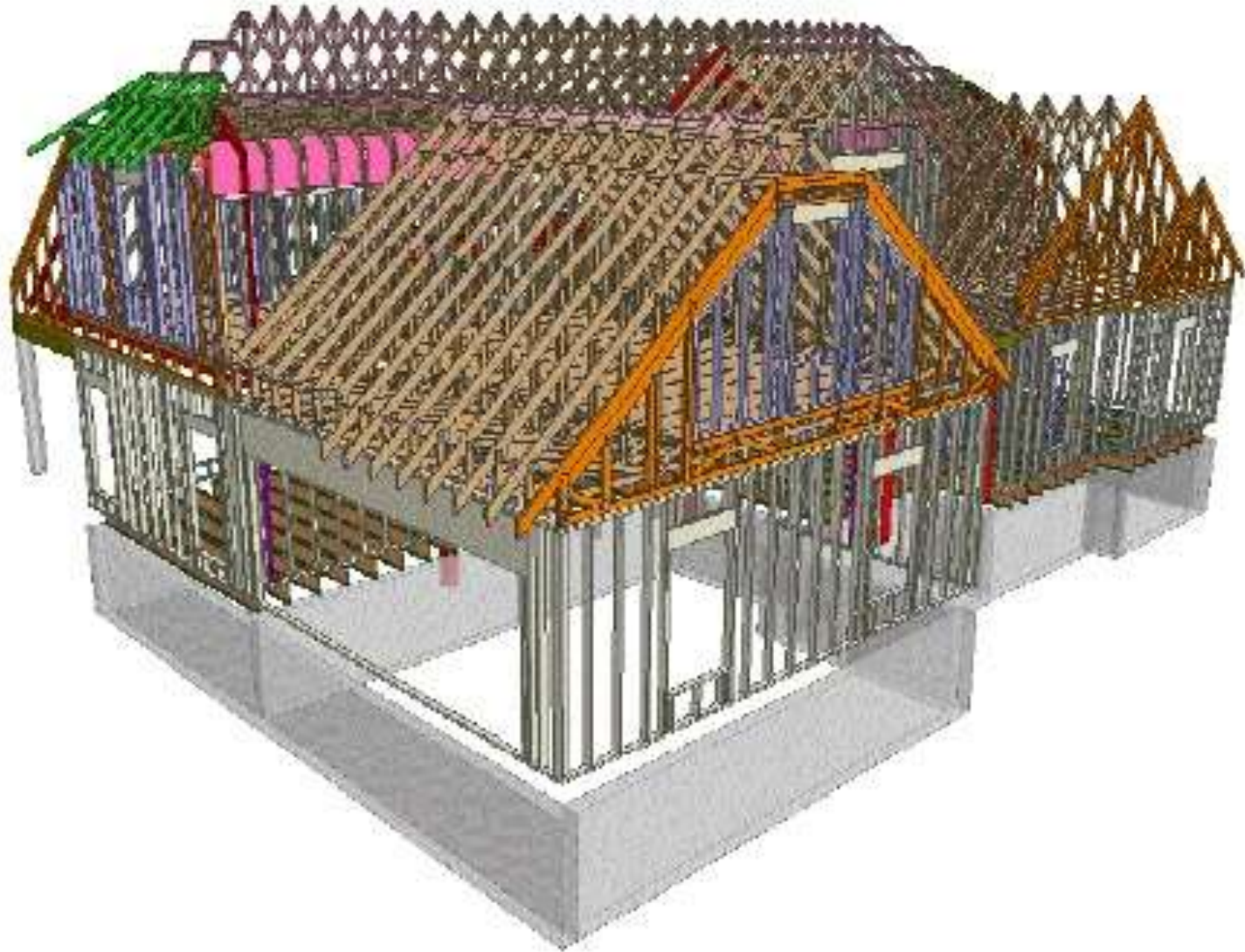
QUALITY SYSTEM BASED ON BEST PRACTICES



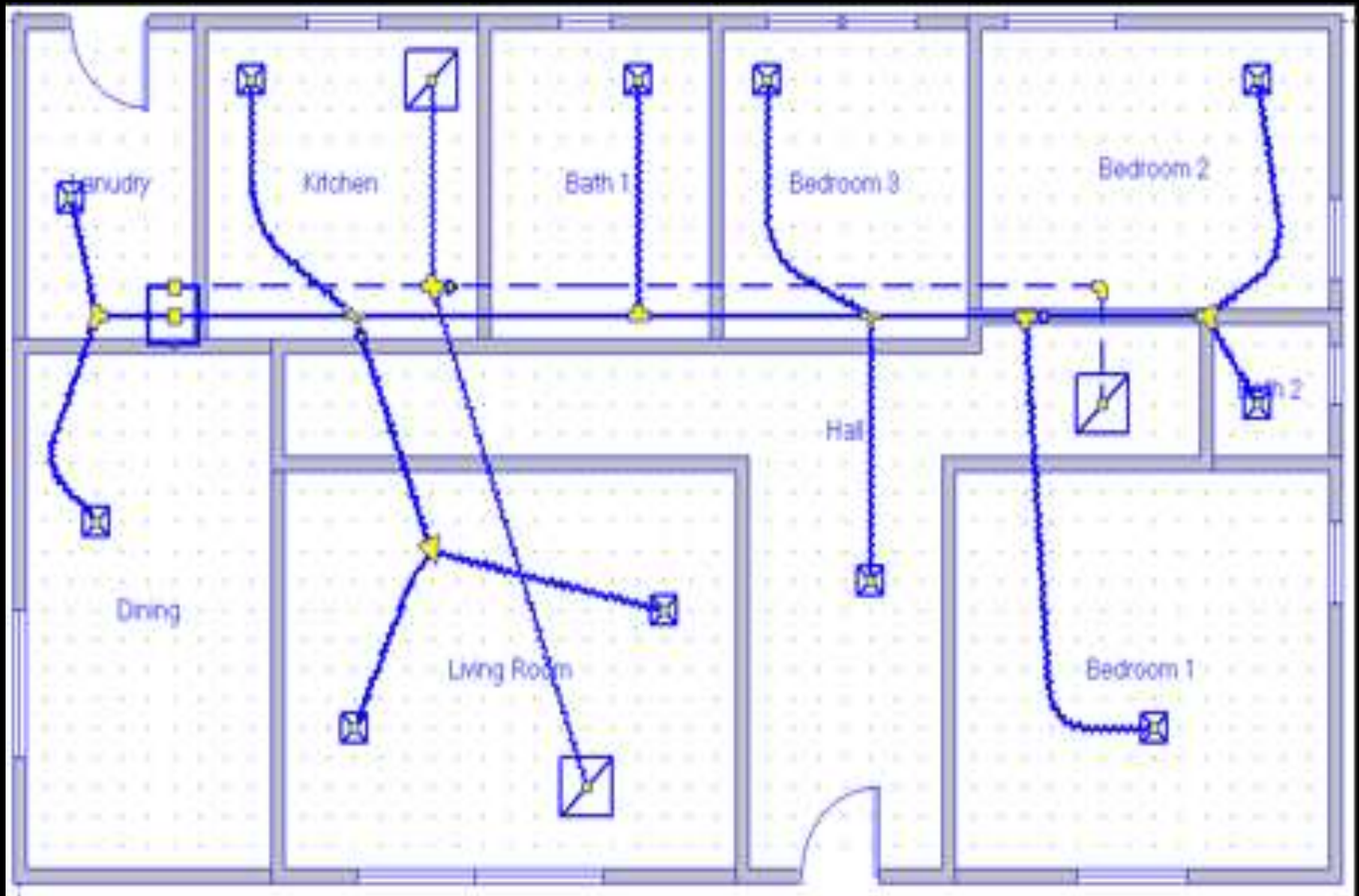
HIGH PERFORMANCE DESIGN



HIGH PERFORMANCE ENGINEERING



HIGH PERFORMANCE MECHANICALS



HIGH PERFORMANCE RENEWABLE ENERGY DESIGN



HIGHPERFORMANCE FOUNDATIONS



HIGHPERFORMANCE FOUNDATIONS



HIGH PERFORMANCE WALLS



HIGH PERFORMANCE WALLS



HIGH PERFORMANCE HVAC DUCTS



HIGH PERFORMANCE INDOOR AIR



*HIGH*PERFORMANCE RENEWABLES



ADOPTION OF *HIGH*PERFORMANCE METHODS



HIGH PERFORMANCE DAYLIGHTING




ADDISON
HOMES

HIGHPERFORMANCE MESSAGING

A Healthy Home Begins With Clean Air...



Breathe Easy.

All Addison Homes feature EarthCraft House™ Certification, a blueprint for healthy, comfortable homes that improve air quality, reduce utility bills and protect the environment.




ADDISON
HOMES, LLC



Call us today and find out more about our energy-efficient and environmentally friendly homes!
864-918-0652 • 864-232-6888 • www.addison-homes.com

HIGH PERFORMANCE OPERATION



To view information printed on the back of your bill please click or go to <http://www.duke-energy.com/north-carolina/billing/back-of-bill.asp>

TRAILS EDGE CT

Account Number
 Verification Code 9
 Bill Date 04/07/2017
Current Charges Past Due After 05/02/2017

Service From: MAR 01 to APR 03 (33 Days)

Your next scheduled meter reading will occur between MAY 02 and MAY 05

PREVIOUS BILL AMOUNT	PAYMENTS (-)	NEW CHARGES (+)	ADJUSTMENTS (+ OR -)	AMOUNT DUE (=)
\$21.35	\$21.35	\$9.37	\$0.00	\$9.37

METER NUMBER	METER READINGS: PREVIOUS	METER READINGS: PRESENT	MULTI-PLIER	TOTAL USAGE	RATE SCHEDULE DESCRIPTION	AMOUNT
909974	1794.676	2297.355	1	503 KWH	RS - Res Srv-Renewable Net Metering	
	429.319	927.921	1	499 KWH	Energy Delivered to Grid	
				4 KWH	RS - Residential Service	8.70
					Fixed Monthly Leaf 50C Charge	.67
Amount Due						9.37

HIGH PERFORMANCE HOMEOWNERS

